

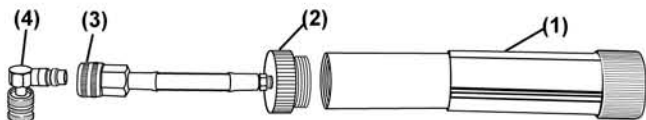


**Mastercool Inc.**  
"World Class Quality"

# DYE/OIL INJECTOR

53123

## Dye Injection Instructions:



### PLEASE USE CAUTION!!

- When injecting dye into a pressurized system, ALWAYS wear safety glasses and gloves!
- Never breathe refrigerant vapor!
- Never use the UV light without wearing the UV glasses!
- Lamp surfaces will get hot very quickly. DO NOT TOUCH THE LENS!

### A. Purging air from the hose assembly

It is important to eliminate any air in the hose before injecting dye into the A/C system. (This process is necessary only once for the setup).

1. Hold the dye injector (1) upward while unscrewing the cap/hose assembly (2). Turn the handle of dye injector (1) counter clockwise all the way before filling. Fill the injector with dye. Replace cap/hose assembly, tightening securely.
2. While holding the assembly upward, start turning the handle (1) clockwise. Continue turning as dye enters the hose and pushes the air up. Use a pen to press the depressor of the coupler (3) to release the air. Repeat this process as needed until dye appears at the coupler's end.

### B. Injection

1. Turn the A/C system and engine off!!
2. Connect injector to the low side service port of A/C system. Hold body of injector. Use (1) starting line on handle end as a guide. Turn handle clockwise to inject 1 application of dye. (Approximately 1 to 1 1/4 turn(s) for Concentrated Dye). (Approximately 3 1/2 turns(s) for Standard Dye).
3. Disconnect injector from the system and clean any excess dye left around the service port

# DYE/OIL INJECTOR

53123

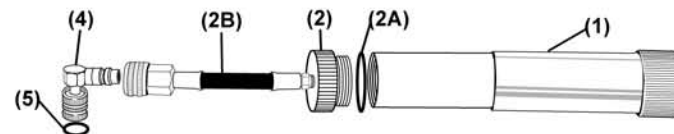
Dye Application Chart	
(AUTOMOTIVE)	1 Application per system (for a system using up to 10 oz. [300 ml] of lubricant)
(HVAC/R)	1 Application per system (for a system using up to 7 lbs. [3.2 kg] of refrigerant)

## Oil Injection Instructions:

A. Follow the Dye Injection Instructions to purge and fill the container.

### B. Injection

1. Turn the A/C system and engine off!!
2. Connect injector to the low side service port of A/C system. Hold body of injector. Use (1) starting line on handle end as a guide. Turn handle clockwise to inject 1 application of oil. (Approximately 3 1/4 turn(s) for 1/4 oz oil).
3. Disconnect injector from the system and clean any excess oil left around the service port



(Fig.)	Part #	Description
(1)	53223-001A	Dye Injector Body
(2)	53223-001B	Cap (only)
(2A)	53223-001C	O-Ring
(2B)	53223-001D	Hose Assembly
(4)	90333-UV	R12 (1/4")FL Shut-Off Valve
(5)	90336	O-Ring for 90333-UV

For Warranty Service:  
Toll Free: 1-888-825-6989 or  
E-mail: techs@mastercool.com



**Mastercool Inc.**  
"World Class Quality"

One Aspen Drive, Randolph, NJ 07869-1103

53123 INJ-INST